

# Kleiber Soft Seating.

Furniture Collection



# Kleiber Soft Seating.

furniture collection



## modular

Planet  
Snake  
Platinum  
Sigma  
Liner  
Cloud  
Modus  
Part  
Verso

## lounges

Age  
Kate Moodlii  
Platinum High Back  
Highline  
Energy  
Thunder  
Jen Moodlii  
Twist  
Twister  
Station  
Loop  
Zoe Moodlii

## pouffes

Oops  
Drop  
Flower  
Puzzle  
Volt & Square  
Check



# soft seating.

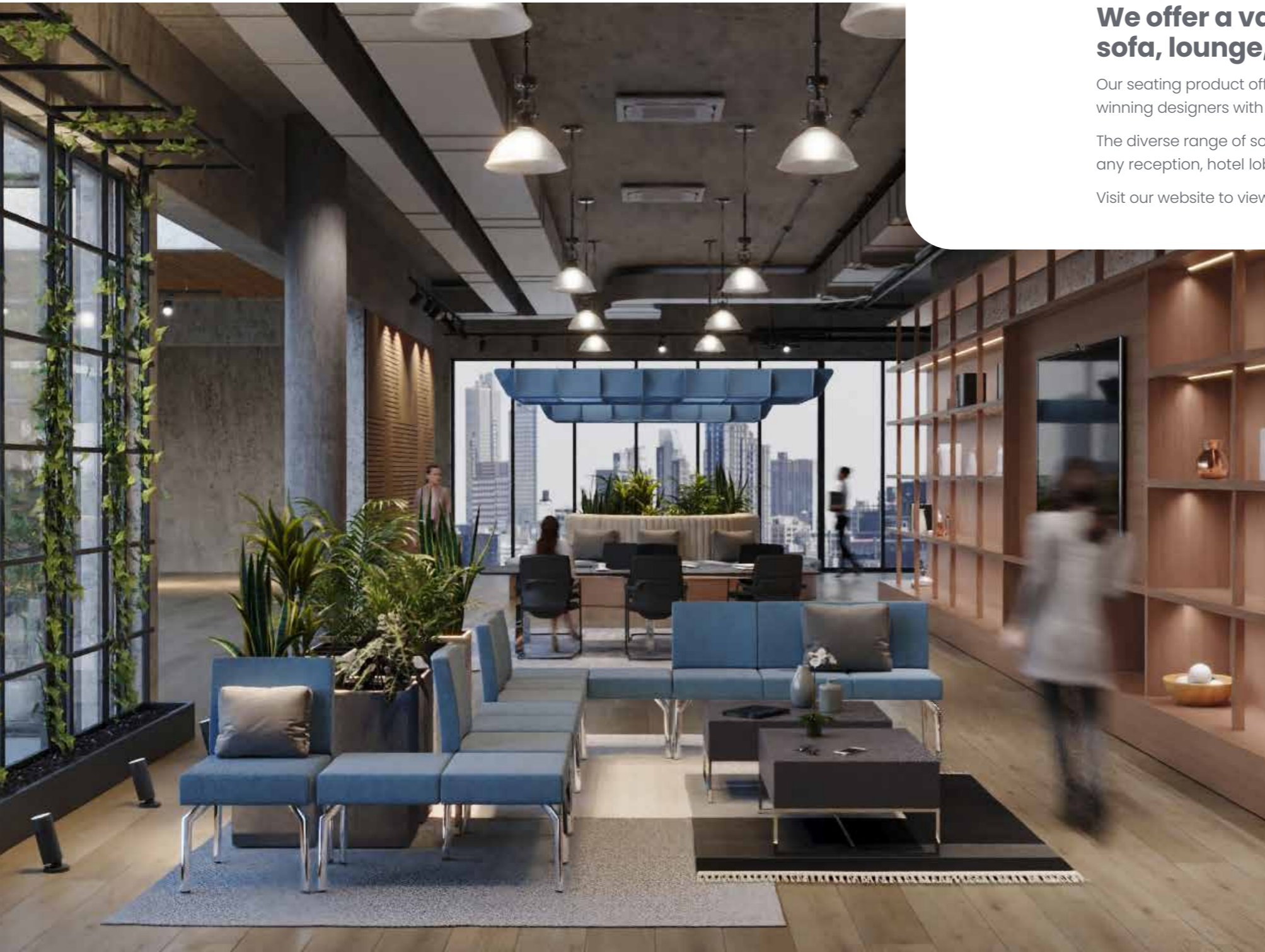


## We offer a vast range of soft seating options including sofa, lounge, armchair, pouffes and more.

Our seating product offer is one of our largest collections. Our ranges are crafted by talented, award winning designers with ergonomics and well-being at the forefront of design.

The diverse range of soft seating options offer many choices to create comfortable seating to suit any reception, hotel lobby, open space or office environment.

Visit our website to view our full seating range.



## Hotspots

Products featured in this guide have hotspots. Each hotspot allows you to click and find out more about the product via our website.

All seating products can be configured to match your specification. Explore finishes, fabrics and base options to configure the ideal product.



## Platinum 2 Seater

# Modular seating.

## Modular seating allows you to create seating solutions tailored to your space.

Our modular configurator allows users to combine product elements in order to achieve their desired product combination to best suit their space.

Modular offers a combination of sofa, armchairs, pouffes and tables over various product ranges.

Visit our website to view our full soft seating range.





# Pl@net Modular

## Modular furniture consisting of simple units with numerous configuration possibilities.

The aim of this product line is to create comfortable seating to suit any reception, hotel lobby, open space or office environment.

Pl@net offers multiple combinations with its simple elements, corner system furniture and high back options. The use of high backs and sound absorbing materials can increase the acoustic comfort for the user.

### FABRIC

Visit website for full list of fabrics

### Key Features:

Pouffes, straight and corner seats.

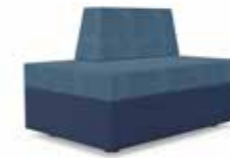
Seats available with back cushions and walls in three heights.

A single armchair with high walls.

A seat unit with a top, with three walls and a roof.

Hanging walls are available for straight, corner or curved units, with the possibility of installing a TV or lamp.

Units are connected with Velcro strips. Velcro masking strips are available.



Planet 1200L

H776	1200w x 800d x 776h mm
H1160	1200w x 800d x 1160h mm
H1512	1200w x 800d x 1512h mm



Planet 1200R

H776	1200w x 800d x 776h mm
H1160	1200w x 800d x 1160h mm
H1512	1200w x 800d x 1512h mm



Planet 800

H776	800w x 800d x 776h mm
H1160	800w x 800d x 1160h mm
H1512	800w x 800d x 1512h mm



Planet 800x800

H776	800w x 800d x 776h mm
H1160	800w x 800d x 1160h mm
H1512	800w x 800d x 1512h mm



Planet W60

H776	1220w x 867d x 776h mm
H1160	1220w x 867d x 1160h mm
H1512	1220w x 867d x 1512h mm



Planet Z60

H776	1300w x 867d x 776h mm
H1160	1300w x 867d x 1160h mm
H1512	1300w x 867d x 1512h mm



Planet 31

31	800w x 800d x 776h mm
----	-----------------------



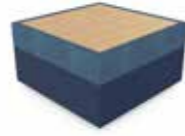
Planet 31HB

31HB	800w x 800d x 1512h mm
------	------------------------



Planet 30

PC30 800w x 800d x 460h mm



Planet 30T

PC30T 800w x 800d x 460h mm



Planet 400

H776	400w x 800d x 776h mm
H1160	400w x 800d x 1160h mm
H1512	400w x 800d x 1512h mm



Planet ZW

H776	800w x 40d x 776h mm
H1160	800w x 40d x 1160h mm
H1512	800w x 40d x 1512h mm



Planet Modular

Create multiple configurations with Planet Modular.





# Snake Modular

**The Snake collection is an unusual arrangement of various units that can build an amazing space.**

The collection is perfect for foyers and reception areas. Easy to connect elements makes it possible to quickly rearrange any space.



## LEG TYPE



METAL LEG

## FABRIC

Visit website for full list of fabrics

## TOPTYPE

Visit website for list of options

## Key Features:

Square and rectangular seat units, ¼ circle, ⅓ circle, with or without a backrest.

Cylindrical support elements, ½ cylinder, ¼ cylinder. Option of chrome or steel leg.

The backrests have plastic feet with adjusters in two heights of 750mm or 1000mm.

Units in the collection are connected by means of an invisible mounting plate and screws.

It is possible to order tops for individual units.



### Snake Rectangular Seater

1000 mm wide	1000w x 500d x 430h mm
1500 mm wide	1500w x 500d x 430h mm



### Snake Rectangular Seater with Backrest

1000 mm wide	1000w x 620d x 1000h mm
1500 mm wide	1500w x 620d x 1000h mm



### Snake Square Seater

500 mm wide	500w x 500d x 430h mm
-------------	-----------------------



### Snake Square Seater with Backrest

500 mm wide	500w x 620d x 1000h mm
-------------	------------------------

| soft seating



🎯 Snake Square Seater

850 mm wide      850w x 700d x 1000h mm



🎯 Snake 45 Degree Corner Section Backrest

750 mm wide      750w x 700d x 1000h mm



🎯 Snake 45 Degree Corner Section

1000 mm wide      1000w x 500d x 430h mm



🎯 Snake Round Backrest

750 mm high      1000w x 750h mm  
1000 mm high      1000w x 1000h mm



🎯 Snake D-Shape Backrest

750 mm high      1000w x 500d x 750h mm  
1000 mm high      1000w x 500d x 1000h mm



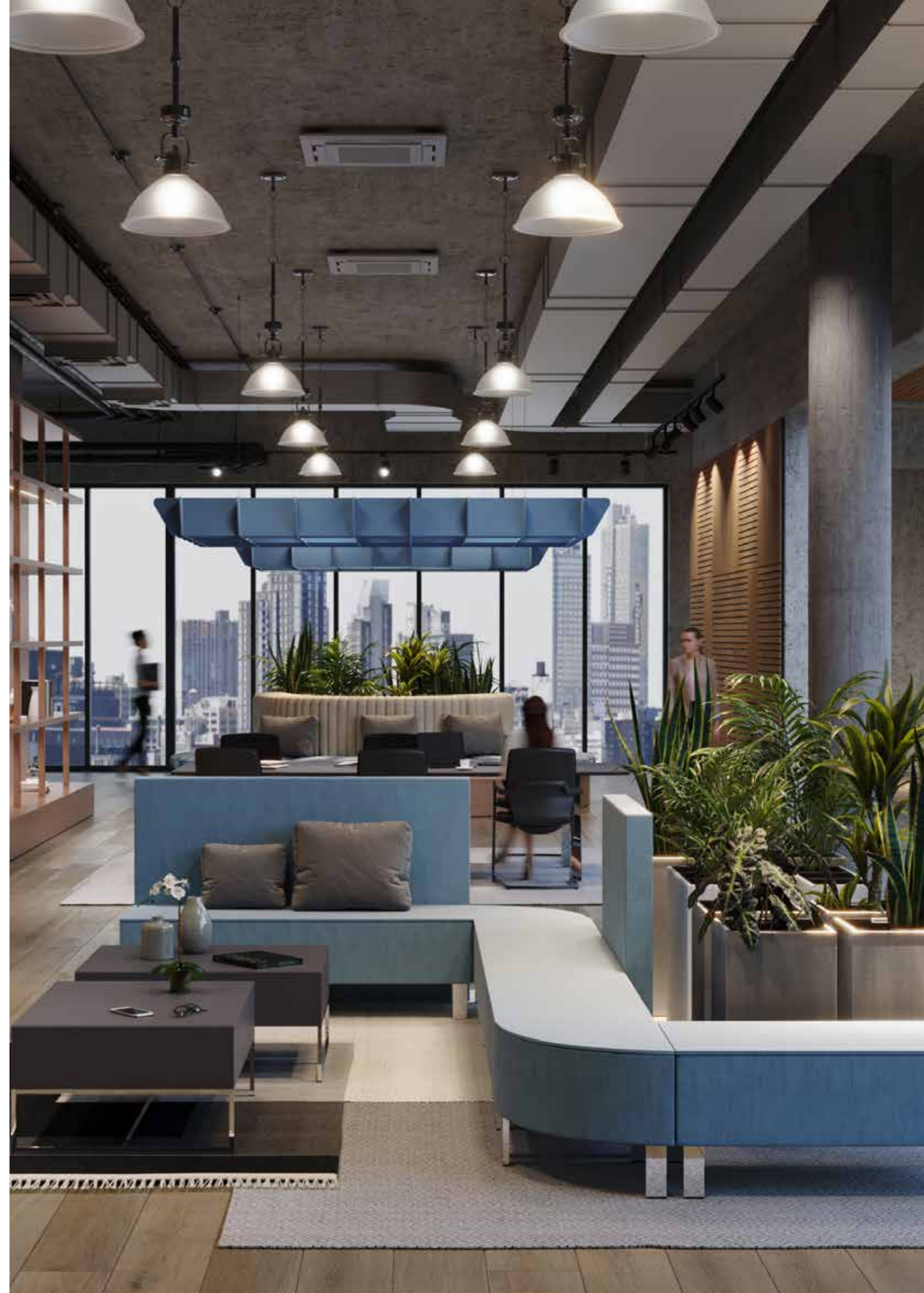
🎯 Snake 90 Degree Corner Section Backrest

750 mm high      500w x 500d x 750h mm  
1000 mm high      500w x 500d x 1000h mm



🎯 Snake Modular

Create multiple configurations with Snake Modular.







# Platinum Modular

## Platinum is a perfect fit for both modern and classic interiors.

The timeless line of cabinet sofas and armchairs guarantees unprecedented seating comfort and impressive durability. The furniture comes standard with a decorative aluminium frame and round aluminium legs. Standard feet can be replaced by skids or an elegant C-shaped frame, as well as a frame completely made of stainless steel.



### LEG TYPE



METAL LEG    ROUND ALUMINIUM LEG    CHROME CANTILEVER LEGS    ROUND WOODEN LEGS

### FABRIC

Visit website for full list of fabrics

### Key Features:

Available in single, double and triple versions.  
Option of 4 leg types.  
Seat and back cushion fastened with velcro to the body of the furniture.  
Pillows have zippered covers.



### Platinum Single

With 2 armrests	750w x 750d x 790h mm
With left or right armrest	660w x 750d x 790h mm



### Platinum 2 Seater

With 2 armrests	1320w x 750d x 790h mm
With left or right armrest	1230w x 750d x 790h mm



### Platinum 3 Seater

With 2 armrests	1890w x 750d x 790h mm
With left or right armrest	1800w x 750d x 790h mm



### Platinum Corner Seater

970w x 750d x 790h mm
With no armrests



### Platinum Modular

Create multiple configurations with Platinum Modular.



### Platinum Pouffe

710w x 750d x 450h mm
Standard Pouffe



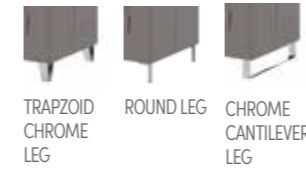
# Sigma Modular

**This contemporary but comfortable reception sofa range makes a statement in any office, with its unique design and high quality finish.**

Sigma modular is ideal for any reception or waiting area. Sigma comes in a range of options and fabric finishes that are a stylish and modern choice for the staff room, reception or any breakout area.



### LEG TYPE



TRAPZOID CHROME LEG    ROUND LEG    CHROME CANTILEVER LEG

### FABRIC

Visit website for full list of fabrics

### Key Features:

The collection includes a single, double or triple version and a pouffe.

The seats have armrests, there is also a version without a left or right armrest.

Option of 4 leg types.

Round leg available in several metal finishes.



### ◎ Sigma Single

No armrests	520w x 790d x 695h mm
With 2 armrests	890w x 790d x 695h mm
With left or right armrest	790w x 790d x 695h mm



### ◎ Sigma 2 Seater

No armrests	1170w x 790d x 695h mm
With 2 armrests	1500w x 790d x 695h mm
With left or right armrest	1335w x 790d x 695h mm



### ◎ Sigma 3 Seater

No armrests	1940w x 790d x 695h mm
With 2 armrests	1610w x 790d x 695h mm
With left or right armrest	1775w x 790d x 695h mm



### ◎ Sigma Corner Seater

790w x 790d x 695h mm
With no armrests



### ◎ Sigma Modular

Create multiple configurations with Sigma Modular.



### ◎ Sigma Pouffe

570w x 420d x 430h mm
-----------------------



# Liner Modular

## This modular piece of furniture allows for the creation of separate spaces.

It enhances the professional set up of open space offices as well as lounges, receptions, restaurants and conference rooms. Wherever you place Liner furniture, you will create a pleasant, separated space, ideal for discussions or relaxation. The use of high backrests as well as soundproof materials allows for better acoustic comfort for Liner users.



### FABRIC

Visit website for full list of fabrics

### Key Features:

Each unit can be upholstered (seat, backrest and headrest) in any colour.

Standard legs, 40 mm high, powder coated.

Wooden frame: consisting of solid wood, chipboard and plywood.

Seat: N-4060 foam.

Legs: powder-coated legs height 40mm or 90mm with regulators.



🎯 Liner - Seater (600)

600w x 750d x 1520/1570h mm



🎯 Liner - Seater (900)

900w x 750d x 1520/1570h mm



🎯 Liner - Seater (1200)

1200w x 750d x 1520/1570h mm



🎯 Liner - Corner

900w x 900d x 1520/1570h mm



🎯 Liner Pouffe

450w x 450d x 460h mm

# Cloud Modular

**Cloud is a range of seating options that can be combined with each other to create your perfect soft seating arrangement.**

Individual units come with and without backrests or armrests, offering a myriad of possibilities for office spaces, reception areas and waiting rooms. One, two or three seaters can be separated by desk tops, so the user has more freedom to sit with a place to set documents.



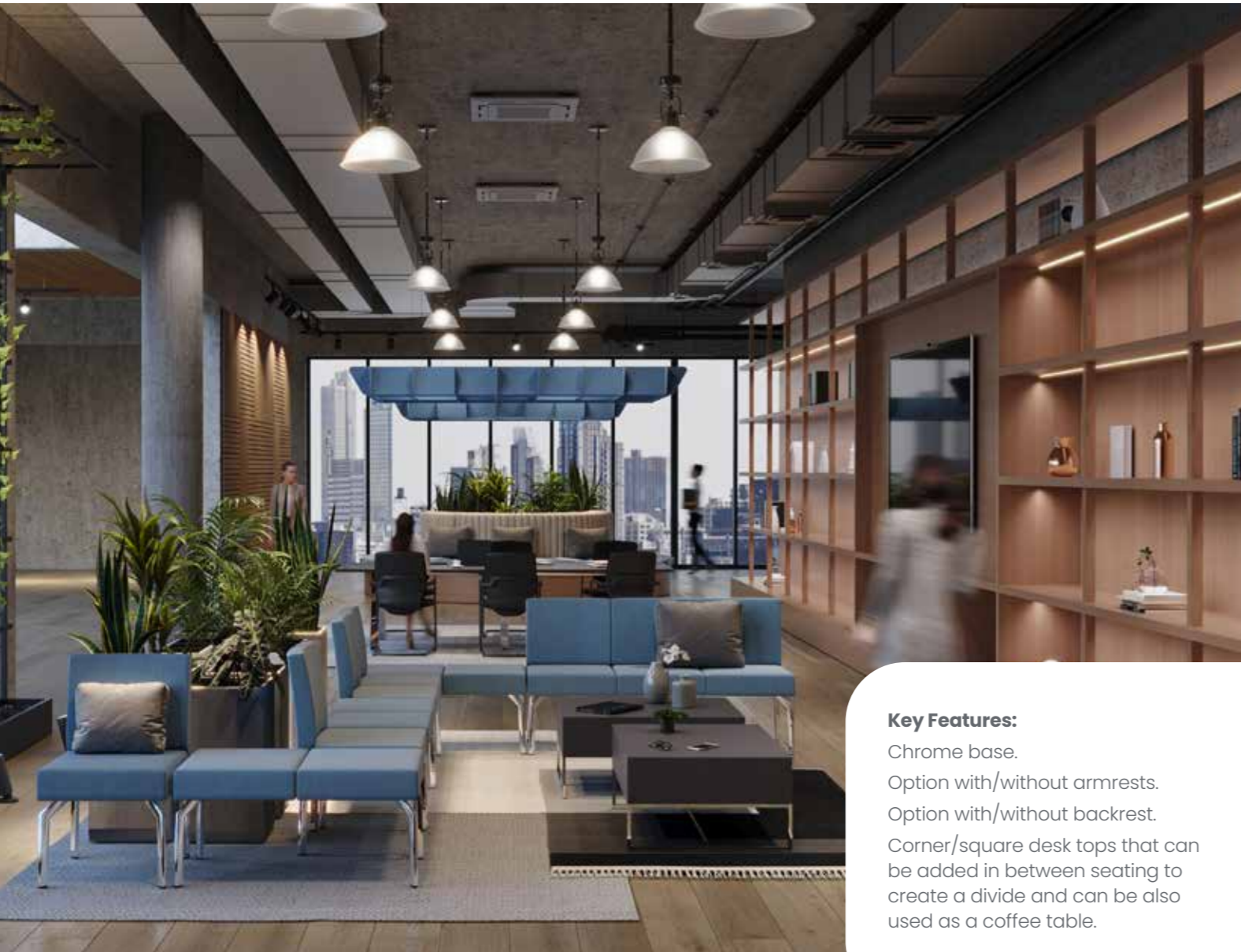
**BASE TYPE**



CHROME  
BASE

**FABRIC**

Visit website for  
full list of fabrics



**Key Features:**

- Chrome base.
- Option with/without armrests.
- Option with/without backrest.
- Corner/square desk tops that can be added in between seating to create a divide and can be also used as a coffee table.



**Cloud no armrests**

Single Seater	510w x 535d x 470h mm
2 Seater	1020w x 535d x 470h mm
3 Seater	1530w x 535d x 470h mm



**Cloud Single Seater**

<b>With Backrest</b>	
No Armrests	510w x 595d x 860h mm
Left Armrest	550w x 595d x 860h mm
Right Armrest	550w x 595d x 860h mm
Both Armrests	590w x 595d x 860h mm



**Cloud 2 seater**

<b>With Backrest</b>	
No Armrests	1020w x 595d x 860h mm
Left Armrest	1060w x 595d x 860h mm
Right Armrest	1060w x 595d x 860h mm
Both Armrests	1145w x 595d x 860h mm



**Cloud 3 seater**

<b>With Backrest</b>	
No Armrests	1530w x 595d x 860h mm
Left Armrest	1615w x 595d x 860h mm
Right Armrest	1615w x 595d x 860h mm
Both Armrests	1655w x 595d x 860h mm



**Cloud 2 seater corner**

Right corner and left armrest	1145w x 595d x 860h mm
Left corner and Right armrest	1145w x 595d x 860h mm
Right Corner	1105w x 595d x 860h mm
Left Corner	1105w x 595d x 860h mm



**Cloud 3 seater corner**

Right corner and left armrest	1655w x 595d x 860h mm
Left corner and Right armrest	1655w x 595d x 860h mm
Right Corner	1615w x 595d x 860h mm
Left Corner	1615w x 595d x 860h mm



**Cloud Modular**

Create multiple configurations with Cloud Modular.



**Cloud Tops**

Corner Top	500w x 525d mm
Square Top	500w x 525d mm



# Modus Modular

**The Modus collection consists of simple units that will allow you to relax and rest.**

The Modus collection is perfect for areas such as relaxation zones, open office spaces, reception areas, cafes and restaurants. A stylish collection with the possibility of changing the fabric colours for different units.

**Key Features:**

- Straight, round and corner seat options available.
- Single or double seat units.
- Corner seat units available.
- Furniture on metal legs or set on a plinth made of veneered chipboard.



**LEG TYPE**



METAL LEG

HIGH PLINTH

**FABRIC**

Visit website for full list of fabrics



**Modus - 1 Seater**

Metal Legs	650w x 680d x 1200h mm
High Plinth	650w x 775d x 1590h mm



**Modus - 2 Seater**

Metal Legs	1000/1200w x 680d x 1200h mm
High Plinth	1000/1200w x 775d x 1590h mm



**Modus - Round Seater**

No armrests	1940w x 790d x 695h mm
With 2 armrests	1610w x 790d x 695h mm



**Modus - Corner**

Metal Legs	680w x 680d x 1200h mm
High Plinth	680w x 680d x 1590h mm



**Modus - Round Seater**

570w x 420d x 430h mm
-----------------------



**Modus Modular**

Create multiple configurations with Modus Modular.



**Modus - Round Seater**

Metal Legs	650w x 680d x 450h mm
High Plinth	650w x 775d x 840h mm



# Part Modular

## The Part collection includes simple corner seat units, armrests and pouffes.

The Part collection is exceptionally comfortable, and large seats will allow employees to rest and relax during breaks. Seats are perfect for relaxation zones, but also for reception areas. As the seats do not have armrests, they can be freely combined to create the desired configuration.

For better mobility, you can install rollers that will make it easier to move Part units. Large, rectangular shapes ensures the furniture fits into any space and fills it wonderfully. The pouffe can be used as a table with three different melamine tops to choose from.



### TOPTYPE



PLAIN FABRIC    WHITE MELAMINE TOP    BLACK MELAMINE TOP    GREY MELAMINE TOP

### FABRIC

Visit website for full list of fabrics

### Key Features:

- Seats without armrests.
- Units of different widths.
- Available corner seat units, armrests and pouffes.
- Furniture on round legs.
- Possibility of installing rollers, two pieces without a brake, two with an external brake.
- Connect the seat units with hooks attached to the furniture.



### Part Armchair

No armrests	1170w x 790d x 695h mm
With 2 armrests	1500w x 790d x 695h mm
With left or right armrest	1335w x 790d x 695h mm



### Part Sofa

No armrests	520w x 790d x 695h mm
With 2 armrests	890w x 790d x 695h mm
With left or right armrest	790w x 790d x 695h mm



### Part Corner

No armrests	1940w x 790d x 695h mm
With 2 armrests	1610w x 790d x 695h mm
With left or right armrest	1775w x 790d x 695h mm



### Part Modular

Create multiple configurations with Part Modular.



### Part Pouffe

570w x 420d x 430h mm



### Part Armrest

790w x 790d x 695h mm

With no armrests



# Verso Modular

**This collection is elegant and very geometrical in form. Sharp shapes and a simple frame on which the seats are mounted imbue the furniture with a futuristic vibe.**

The seats are perfect for elegant spaces with modern décor or glamor-style offices. A piece of Verso placed in the reception area, waiting room or a large hall is sure to catch the eye.



### SEAT OPTIONS



### FABRIC OPTIONS

Visit website for full list of fabrics

### BASE FINISH OPTIONS

Visit website for full list of finishes

### Key Features:

The Verso collection includes a single, double or triple version.

Seats have armrests. There is also a version without a left or right armrest.

Version with one armrest in combination with a full sofa, creates a corner layout.

Furniture mounted on a powder-coated metal frame.



### ◎ Verso Armchair

No armrests	520w x 790d x 695h mm
With 2 armrests	890w x 790d x 695h mm
With left or right armrest	790w x 790d x 695h mm



### ◎ Verso 2 Seater

No armrests	1940w x 790d x 695h mm
With 2 armrests	1610w x 790d x 695h mm
With left or right armrest	1775w x 790d x 695h mm



### ◎ Verso 3 Seater

No armrests	1940w x 790d x 695h mm
With 2 armrests	1610w x 790d x 695h mm
With left or right armrest	1775w x 790d x 695h mm



### ◎ Verso Modular

Create multiple configurations with Verso Modular.



## Lounge seating.

**We offer a vast range of lounge seating options sofas, armchairs and foot rests.**

Our lounge seating ranges are ideal for any reception or waiting area. The ranges come with a large selection of options and fabric finishes that are a stylish and modern choice for any interior.





# Age Lounge

## The Age collection is modelled on the 1970's century.

The large seat and backrest offer the ultimate comfort while the metal frames boast a classic, yet fashionable design. Ideally used for the lobby, reception or waiting room, but also an excellent choice for hotel rooms.

Perfect for any office interior.



### FABRIC

Visit website for full list of fabrics

### Key Features:

Both single and double versions are available with low or high backrest.

All versions of armchairs and sofas are available on a wooden frame in an exciting colour palette of anthracite, nature beech, black or wenge.

All versions of armchairs and sofas are also available on a metal frame with 4 legs or a steel frame with 2 runners.



### Age Armchair

850 diameter x 400h mm

Fabric Finishes [See website](#)



### Age 2 Seater

1050 diameter x 400h mm

Fabric Finishes [See website](#)



### Age 3 Seater

1250 diameter x 400h mm

Fabric Finishes [See website](#)



# Kate Moodlii Lounge

**A timeless design that fits perfectly into any interior.**

The armchair is exceptionally comfortable, stylish and elegant. It fits perfectly into relaxation zones, receptions and waiting rooms. In this collection, the backrests are profiled and provide lumbar support.



**UPHOLSTERY TYPE**



PLAIN FABRIC

TUFTED FABRIC

**FABRIC**

Visit website for full list of fabrics

**LEG TYPE**



WOODEN LEGS

METAL LEGS

SLED BASE

**LEG FINISHES**

Visit website for full list of finishes

**Key Features:**

Both single and double versions are available with low or high backrest

All versions of armchairs and sofas are available in a wooden frame with a colour palette of anthracite, nature beech, black, wenge

All versions of armchairs and sofas are also available in a metal frame with 4 legs or a steel frame with 2 runners.



**🎯 Kate Moodlii Chair**

**Low backrest**

Upholstery	Plain or tufted - see website for fabric finishes
Leg Finish	Wooden, metal or sled - see website for finishes



**🎯 Kate Moodlii Armchair**

**Mid backrest**

Upholstery	Plain or tufted - see website for fabric finishes
Leg Finish	Wooden, metal or sled - see website for finishes



**🎯 Kate Moodlii Armchair**

**High backrest**

Upholstery	Plain or tufted - see website for fabric finishes
Leg Finish	Wooden, metal or sled - see website for finishes



**🎯 Kate Moodlii Sofa**

**Mid backrest**

Upholstery	Plain or tufted - see website for fabric finishes
Leg Finish	Wooden, metal or sled - see website for finishes



**🎯 Kate Moodlii Sofa**

**High backrest**

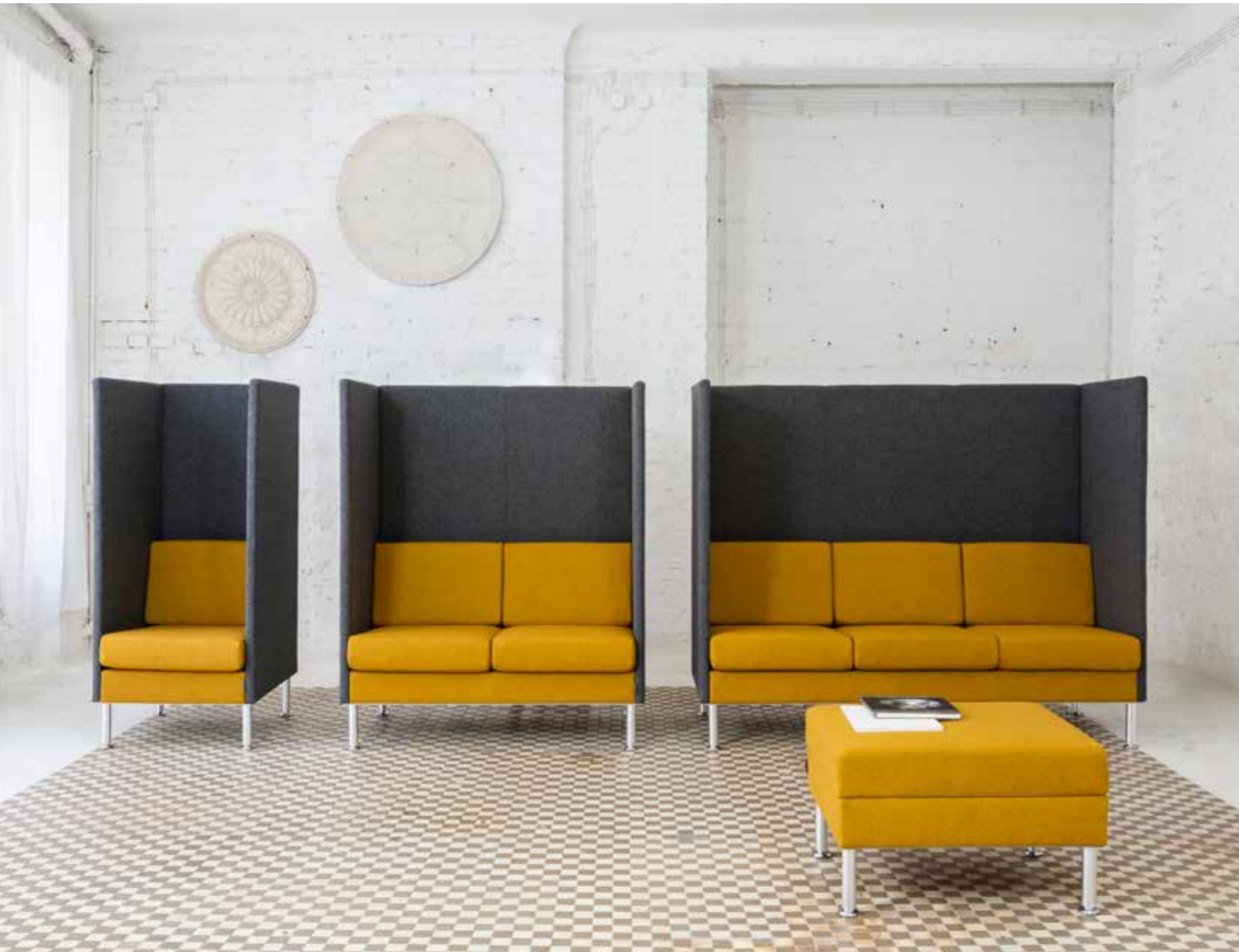
Upholstery	Plain or tufted - see website for fabric finishes
Leg Finish	Wooden, metal or sled - see website for finishes



# Platinum High Back

**Privacy, style and comfort are delivered in one convenient package with Platinum High Back.**

Platinum High Back is created to help isolate you from the noise of a busy open plan office and affords the opportunity to concentrate during important conversations.



### LEG TYPE



PLATE LEG    TUBE LEG    SQUARE LEG

### FABRIC

Visit website for full list of fabrics

### Key Features:

- High comfortable back.
- Available in single, double and triple versions.
- Option of 3 leg types / 3 metal finishes
- Seat and back cushion fastened with velcro to the body of the furniture.
- Pillows have zippered covers.
- Choose between matching or contrasting fabrics.



### Platinum HB Single Seater

660w x 790d x 1500h mm

Leg Type	Plate, Tube, Square
Leg Finishes	Chrome, Stainless Steel, Painted Metal



### Platinum HB Single Seater Wide

960w x 790d x 1500h mm

Leg Type	Plate, Tube, Square
Leg Finishes	Chrome, Stainless Steel, Painted Metal



### Platinum HB 2 Seater

1240w x 790d x 1500h mm

Leg Type	Plate, Tube, Square
Leg Finishes	Chrome, Stainless Steel, Painted Metal



### Platinum HB 3 Seater

1820w x 790d x 1500h mm

Leg Type	Plate, Tube, Square
Leg Finishes	Chrome, Stainless Steel, Painted Metal



# Highline Lounge

## Premium & luxurious reception seating .

Highline's contemporary linear structure combines clean lines with generously padded upholstery and striking stitch detail for ultimate style and comfort. Highline is available as an armchair, 2 and 3-seater sofa.



### FABRIC

Visit website for full list of fabrics

### Key Features:

Chrome-plated skids, 190mm high at the front and 120mm high at the back.  
 Seat fixed with velcro to the body of the furniture.  
 Back cushions are not attached.  
 Zipped pillow covers.



🎯 Highline Armchair

790w x 780d x 770h mm



🎯 Highline 2 Seater

1410w x 780d x 770h mm



🎯 Highline 3 Seater

1970w x 780d x 770h mm



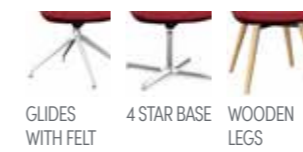
# Zoe Moodlii

**Zoe Lounge range is ideal for conference rooms & hotel lobbies. Zoe has a fresh contemporary design.**

This range of soft seating is versatile and lends itself to any environment. Zoe is super comfortable with a padded foam, bucket-like seat design. It supports you while you sit.



**BASE TYPE**



GLIDES WITH FELT    4 STAR BASE    WOODEN LEGS

**FABRIC**

Visit website for full list of fabrics

**Key Features:**

- Comfortable bucket shaped seat
- Option of swivel or standard chair
- Sofa or Swing option
- Wide selection of base options



**Zoe Swivel Chair**

Metal base  
610w x 600d x 830h mm



**Zoe Swivel Chair**

Aluminium base  
690w x 690d x 840h mm



**Zoom Chair**

Wooden base  
610w x 600d x 830h mm



**Zoe Sofa**

1250w x 600d x 870h mm



**Zoe Swing**

1973w x 1524d x 1913h mm



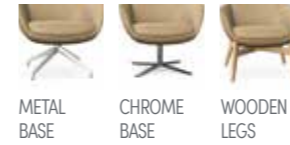
# Loop Lounge



**A collection of furniture perfect for informal meetings in the office, as well as waiting rooms, where a relaxed intimate atmosphere is desired.**

The range includes armchairs, footrests, sofas and the option of low or high backrests. The entire range has a sleek modern form that will compliment any interior.

**BASE TYPE**



**Key Features:**  
 3 chair base options  
 Swivel feature  
 Sleek modern form



**Loop Low Backrest Armchair**

Wooden base  
 780w x 790d x 810h mm



**Loop High Backrest Armchair**

Wooden base  
 780w x 790d x 1130h mm



**Loop High Backrest Armchair**

Chrome Base  
 780w x 790d x 1130h mm



**Loop High Backrest Armchair**

Metal Base  
 780w x 790d x 1130h mm



**Loop Footrest**

Chrome Base  
 710w x 710d x 430h mm



**Loop Footrest**

Metal Base  
 710w x 710d x 420h mm



**Loop Two - Seater Sofa**

With headrest - wooden legs  
 1250w x 600d x 1130h mm



**Loop Two - Seater Sofa**

Without headrest - wooden legs  
 1420w x 790d x 810h mm



# Energy Lounge

**The Energy collection consists of an armchair and sofa. The relaxed minimalist design is perfect for small, modern, and functional interiors.**

The collection is the perfect choice for both reception areas and offices. The Energy sofa is a 3-seater sofa that can be unfolded and used as a double bed.



#### FABRIC OPTIONS

Visit website for full list of fabrics

#### BASE FINISH OPTIONS

Visit website for full list of finishes

#### Key Features:

The Energy collection includes a single armchair and a 3 seater sofa.

3 seater sofa when unfolded can be used as a double bed.

Unfolded sofa dimensions 1360 x 2000 mm.

Furniture mounted on a powder-coated metal frame.



**Energy Armchair**

900w x 740d x 775h mm



**Energy 3 Seater**

2120w x 740d x 775h mm



# Station Lounge

**A soft seating range that has a minimal and sleek design – perfect for any waiting area or breakout space.**

Station has a low but comfortable back and is finished with modern metal legs with a selection of different finishes.



**BASE TYPE**



METAL LEG  
15 FINISH OPTIONS

**FABRIC**

Visit website for full list of fabrics

**Key Features:**

- Low comfortable back.
- Available in single, double and triple versions.
- Option of 1 leg type / 15 metal finishes
- A large selection of fabric options to suit any interior



**Station Single Seater**

540w x 650d x 820h mm



**Station 2 Seater**

1020w x 650d x 820h mm



**Station 3 Seater**

1540w x 650d x 820h mm



**Station 4 Seater**

1540w x 650d x 820h mm





## Jen Moodlii



### Three seater bench perfect for break out, reception and conference areas.

Jen is a fantastic addition to any open space where relaxed seating allows people to take a break or catch-up with colleagues in an informal environment.

#### Key Features:

- Three seater bench seating.
- Top stitch detail.
- Choose from a wide selection of upholstery option.
- Black modern hairpin legs



**Jen Moodlii**

2200w x 750d x 440h mm

## Thunder Lounge



### Thunder has a modern design that complements any space and is a perfect statement piece.

Thunder offers comfort with a striking design. It is perfect for any waiting area - eye-catching and comfortable.

#### Key Features:

- Modern square base.
- Swivel feature
- Minimal look with no arms



**Thunder Chair**

Thunder Square Chrome Base Swivel Armchair

780w x 820d x 1130h mm



**Thunder Footrest**

Thunder Square Chrome Base Swivel Foot Rest

600w x 550d x 380h mm



# Twist Lounge

**Twist is a beautiful and stylish lounge chair, which will provide you with the ultimate comfort.**

Set up Twist in a lobby, reception, hotel room or office. Perfectly suited to any decor, it combines the latest trends with the ultimate comfort.

- Key Features:**
- 3 chair/footrest base options
  - Swivel feature
  - Minimal look with no arms

**BASE TYPE**



4 STAR BASE  
ALUMINIUM  
FEET



**Twist Footrest**

Twist Footrest  
600w x 550d x 380h mm



**Twist Chair**

Twist Swivel Armchair  
830w x 840d x 1150h mm



# Twister Lounge

**Twister is a great solution for small spaces, such as reception areas or small office lobbies.**

Available with an option of three different bases and a large selection of fabrics - Twister can adapt to any interior.

- Key Features:**
- 4 star base option
  - Swivel feature
  - Minimal look with no arms

**BASE TYPE**



4 STAR BASE  
ALUMINIUM FEET



**Twister Chair**

Twister Swivel Armchair  
790w x 770d x 910h mm



## Pouffes.

**Pouffes are designed to be easily moved around and can be used in any interior.**

They are often moved around the room to where they are required at a particular time. Perfect to be placed in casual meeting areas where you can grab a seat quickly and join in.



# Check Pouffe

**Check has a very simple design along with decorative elements of quilted stitching on top.**

Different shapes from the Check range allow for any arrangement to suit your needs. The backrests fits perfectly into the seats and can be put on top or placed next to it. The perfect seating range for chillrooms, staff meeting rooms, reception or waiting rooms.



**BASE TYPE**



WOODEN  
TAPERED LEGS

**FABRIC**

Visit website for full list of fabrics

**Key Features:**

Available in a rectangular and L-shaped version. All options are on wooden legs with non-slip pads. The upper part of the seat is crisscrossed with square spades.

Backrests are also available, to complement the rest of the collection, and which can be put on the seat or placed next to it.



**Retangular Seat**

1200w x 800d x 420h mm



**L-Shaped Seat**

1200w x 800d x 420h mm



**L-Shaped Seat**

1600w x 800d x 420h mm



**Backrest on seat**

900w x 300d x 300h mm



**Backrest next to seat**

1200w x 400d x 730h mm



# Volt & Square Pouffe

**Easily moved, the various shapes available make it possible to position them anywhere with a wide choice of configurations.**

They are perfectly suited to the modern decor of offices, stands at fairs, bars, exclusive shops and restaurants. The collection works especially well when creating friendly relaxation zones for employees.



### TOP TYPE



PLAIN FABRIC    WHITE MELAMINE TOP    BLACK MELAMINE TOP    GREY MELAMINE TOP

### FABRIC

Visit website for full list of fabrics

### Key Features:

Pouffe collection including Square, rectangular, round and 1/4 circle-shaped options.

Furniture on plastic feet.

Option to order a version with hidden rollers.

Option to have melamine top on top of pouffe.



### Round Pouffe

430 diameter x 350h mm  
430 diameter x 500h mm



### 90 Degree Pouffe

500w x 500d x 350h mm  
500w x 500d x 500h mm



### Rectangular Pouffe

1000w x 500d x 350h mm  
1000w x 500d x 500h mm



### Rectangular Pouffe

1500w x 500d x 350h mm  
1500w x 500d x 500h mm



### Square Pouffe

500w x 500d x 350h mm  
500w x 500d x 500h mm



### Volt & Square Modular

Create multiple configurations with Modular.



# Oops Pouffe

**A comfortable round pouffe that is available in a range of diameters & colours that will quickly brighten up your office interior.**

Oops can be used for sitting, relaxing and as a convenient table. The pouffes are perfect for breakout areas in an office setting and can be complimented with a sofa or armchair.



### TOPTYPE



PLAIN FABRIC

MELAMINE TOP

### FABRIC

Visit website for full list of fabrics

### Key Features:

Round pouffe with an oval cross-section.

Plastic feet.

Possibility to order a table top that is placed on the top - ideal to use as a table.



**Oops Round Pouffe**

450 diameter x 400h mm



**Oops Round Pouffe**

650 diameter x 400h mm



**Oops Round Pouffe**

850 diameter x 400h mm



**Oops Round Pouffe**

1050 diameter x 400h mm



**Oops Round Pouffe**

1250 diameter x 400h mm



## Drop Pouffe



**A pouffe in the shape of a drop of water. The design of the pouffe allows it to be placed anywhere quickly.**

The design in the shape of a drop of water, is original and eye-catching. Drop is perfect for the open space of a shopping mall, a playground for children located in a building, office waiting room or reception.



### Drop Pouffe

660w x 450d x 450h mm

#### Key Features:

- Rectangular pouffe in the shape of a drop of water.
- Plastic feet.
- Option to order a version with hidden rollers.

## Flower Pouffe



**A pouffe in the shape of a petal. The design allows it to be placed anywhere quickly and with ease.**

The shape of the petal allows the pouffe to be used as a single unit, but also several pouffes can create a whole flower. Flower is perfect for the open space of a shopping mall, a softplay area for children or an office waiting room.



### Flower Pouffe

660w x 450d x 450h mm

#### Key Features:

- Pouffe in the shape of a petal.
- Plastic feet.
- Option to order a version with hidden rollers.



# Puzzle Pouffe

**Puzzle-shaped seating units, make any interior more attractive.**

The shape of the puzzle pieces create a relaxed and funky vibe. Puzzles can stand alone or be assembled in one whole.

**Key Features:**

- Puzzle-shaped seating units.
- Entirely made of polyurethane foam.
- Zippered cover.
- The possibility of ordering in any colour



**Puzzle A**

Puzzle Pouffe  
540w x 540d x 300h mm



**Puzzle B**

Puzzle Pouffe  
400w x 400d x 300h mm





# FLORIS

AVAILABLE  
IN TWO  
HEIGHTS

REMOVABLE  
PLASTIC  
INSERT FOR  
PLANTS

SINGLE  
OR TRIPLE  
VERSIONS

HANDLES  
FOR EASY  
REMOVAL OF  
THE INSERT



## Upholstered Planters

Floris is a beautiful collection of upholstered pots that will enliven any room. The pots are designed with high quality fabrics and their soft texture creates a luxurious yet modern focal point for any space.



### 🎯 About FLORIS

Each planter is easily moved and equipped with retractable handles that allow easy removal of the insert from the upholstered part. The pots are also equipped with hidden rollers, which allow them to be freely rearranged, which will greatly facilitate changing the arrangement of your room.

The Floris planters are designed to highlight the the greenery or flowers. They are upholstered in high quality durable fabrics and available in two heights, single or triple version.

# KLEIBER



**United Kingdom**

Queen Adelaide Way,  
Queen Adelaide, Ely,  
Cambridgeshire, CB7 4UB

**Tel: +44 (20) 37 444496**